

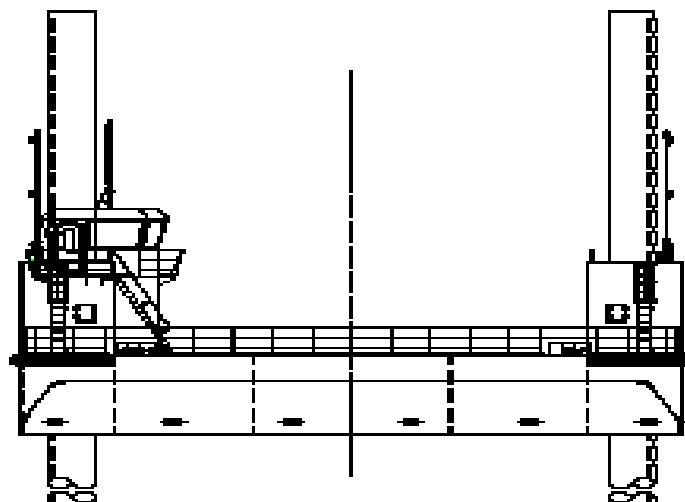
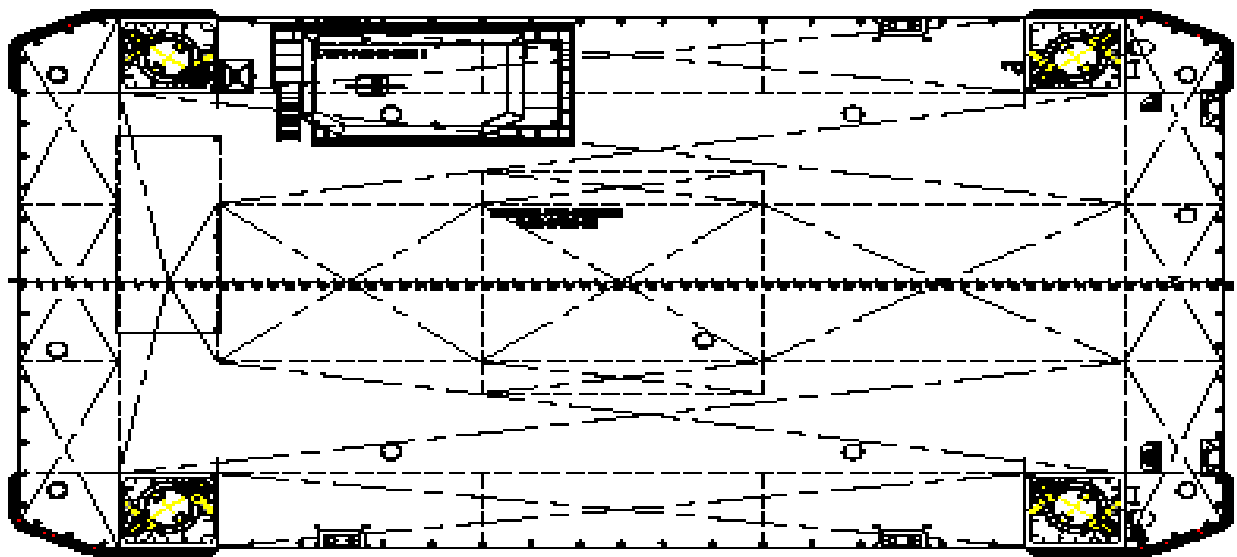
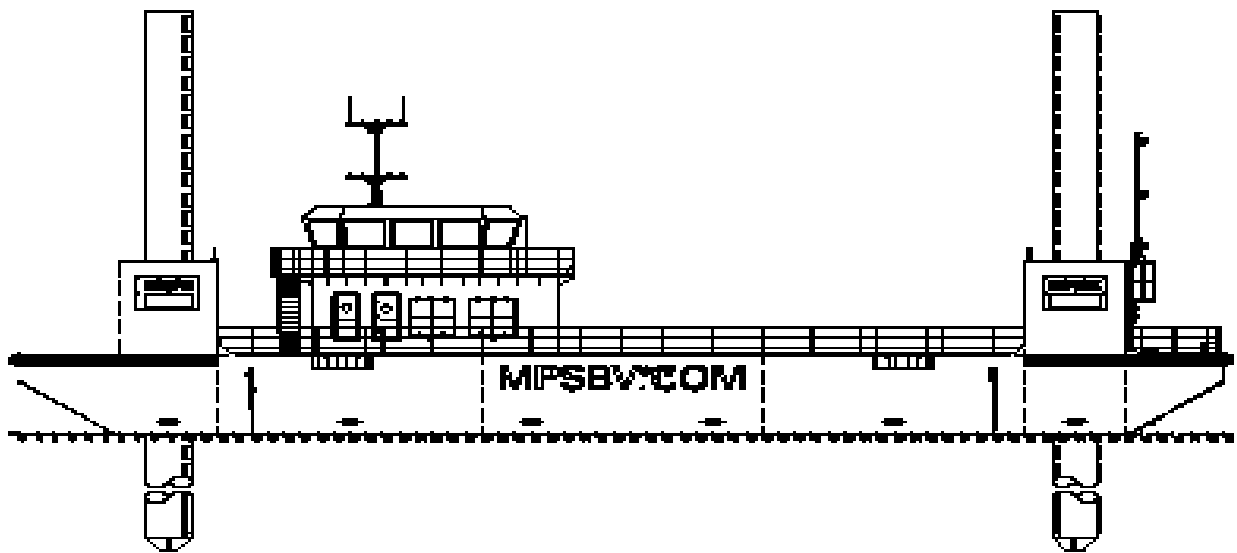


JU 3620 | Jack-Up barge

GENERAL	
YEAR BUILT	2020
HOME PORT	Aalst
CLASSIFICATION	Bureau Veritas I ✕ HULL • MACH Offshore Self Elevating Unit, Coastal Area, Transit over 20 miles from shore with HS < 2.5m

DIMENSIONS	
LENGTH O.A.	36,50 meters
BREADTH MLD.	20,00 meters
DEPTH AT SIDE	2,98 meters
DESIGN DRAUGHT	2,39 meters
DECK LOAD	8 t/m ²
MIN. DESIGN TEMPERATURE	-20 C
JACKING PARAMETERS	
JACKING CAPACITY	335 T/leg
HOLDING FORCE	500 T/leg
VARIABLE LOAD	600 Ton
ELEVATING SPEED	15.6/hour
SPUD LEGS	
LEG LENGTH	47,50 meters
WEIGHT	73 Ton
DIAMETER	1,40 meters

ENVIRONMENTAL CONDITIONS	
OPERATIONAL	
WATER DEPTH	1,5 m/sec
AIRGAP	16 m/sec (25 m/sec)
PENETRATION	3,0 meters (5,0 meters)
SIGNIFICANT WAVE HEIGHT	5,58 meters (9,30 meters)
CURRENT SPEED	0,70 m/s
WIND SPEED	3,20 m/s
ENVIRONMENTAL CONDITIONS	
SURVIVAL	
WATER DEPTH	30,00 meters
AIRGAP	2,00 meters
PENETRATION	4,00 meters
SIGNIFICANT WAVE HEIGHT	0,90 meters
CURRENT SPEED	0,90 m/s
WIND SPEED	4,60 m/s



JU 3620 | Jack-Up barge



Geoseacore Ltd

For more information, please contact us on:

E: info@geoseacore.com W: www.geoseacore.com T: +44 7375412642

