


NP 392 | Jack-Up barge

GENERAL

YEAR BUILT	2014
HOME PORT	Aalst
CLASSIFICATION	BUREAU VERITAS❖I HULL• MACH Offshore self-elevating unit Special type offshore unit/ construction unit Coastal Area Transit over 20 miles from shore with HS< 2.5m

DIMENSIONS

LENGTH O.A.	24,38 meters
BREADTH MLD.	17,08 meters
DEPTH AT SIDE	2,43 meters
DRAFT	1,89 meters
MOONPOOL	Ø 580 mm
MODULAR CONSTRUCTION	21 containers of 20" and 40"

OPERATING CONDITIONS

MAX. DESIGN WATER DEPTH	25 meters
-------------------------	-----------

SPUD LEGS

LENGTH	42,00 meters
DIAMETER	1,2 meters
WEIGHT	15 tons

AUXILIARIES

GENERATOR SETS	2x Perkins E70TAG2M
TOTAL E-POWER	240 kVA
FIFI	Certified fifi system
JACK-UP	Double acting jacking system

CAPACITY

FUEL OIL	1000 liters
HYDRAULIC OIL	3600 liters
DECK LOAD	6 ton/m ²

JACKING PARAMETERS

JACKING SPEED	17 m/hour
VARIABLE LOAD	300 tons
PRELOAD FORCE PER LEG	335 tons

PARAMETERS AT 16 M DEPTH

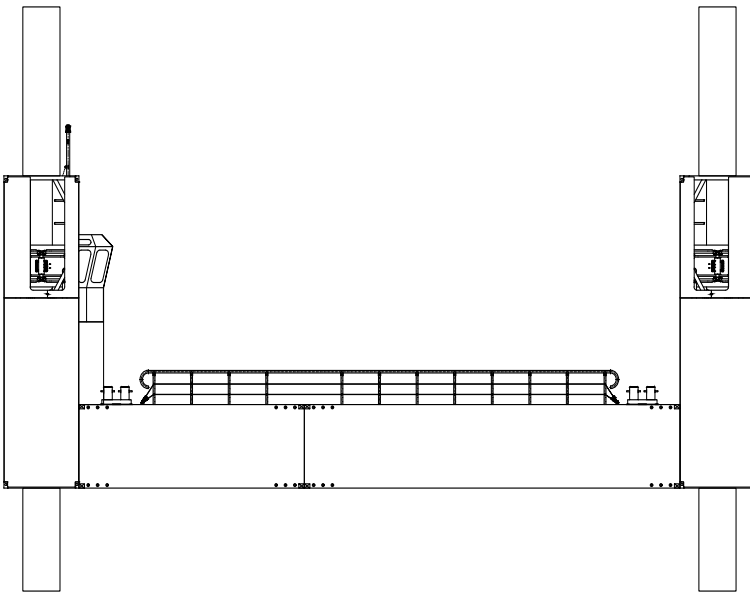
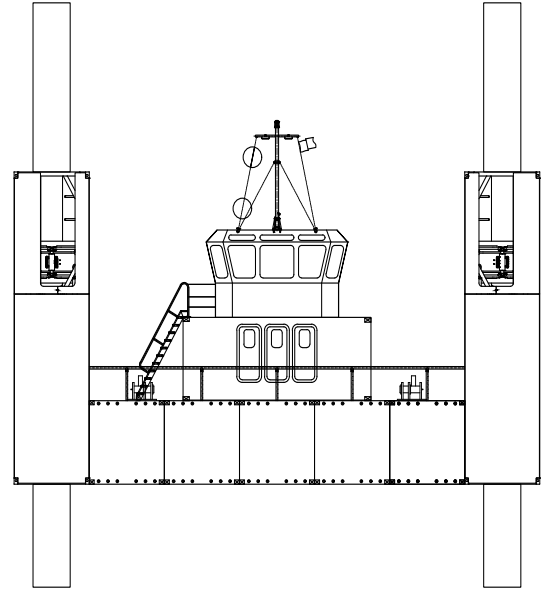
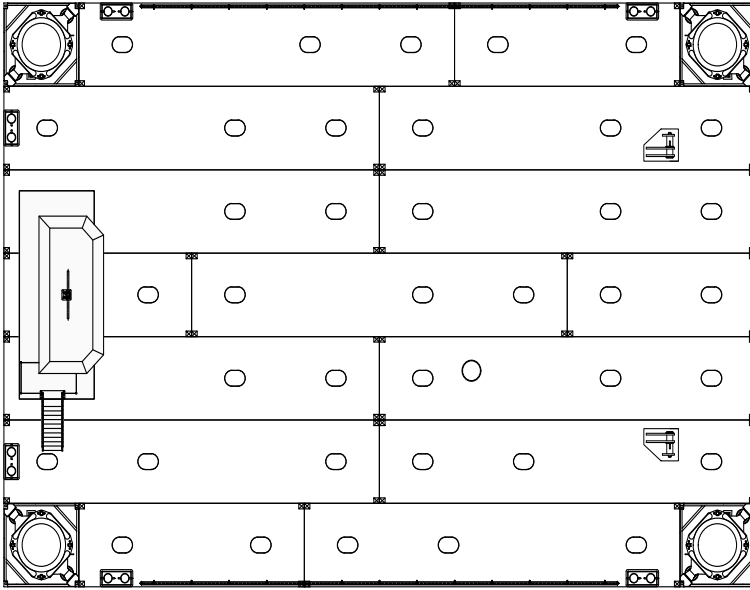
CURRENT VELOCITY	2,0 m/sec
WIND VELOCITY (SURVIVAL)	13 m/sec (30 m/sec)
SIGNIF. WAVE HEIGHT (SURVIVAL)	2,0 meters (4,0 meters)
MAX. WAVE HEIGHT (SURVIVAL)	3,72 meters (7,44 meters)

PARAMETERS AT 20M DEPTH

CURRENT VELOCITY	2,0 m/sec
WIND VELOCITY (SURVIVAL)	13 m/sec (30 m/sec)
SIGNIF. WAVE HEIGHT (SURVIVAL)	2,0 meters (2,5 meters)
MAX. WAVE HEIGHT (SURVIVAL)	3,72 meters (4,65 meters)

OPTIONS

POSITIONING SYSTEM	4-point mooring system
ACCOMMODATION	Modular units



NP 392 | Jack-Up barge



Geoseacore Ltd
 For more information, please contact us on:
 E: info@geoseacore.com W: www.geoseacore.com T: +44 7375412642

